



Planning

LIBRARIES FOR TOMORROW

Johnson & Whittier LLC – 21st Century Renovation

September 14, 2022 **LEGAT** ARCHITECTS



AGENDA

- 1 Process & Engagement
- 2 Library Paradigm Shift
- 3 Types of Spaces
- 4 Kit of Parts
- 5 Johnson LLC
- 6 Whittier LLC
- 7 Timeline



Process & Engagement



- **Community Surveys**

The Library of the Future Survey was developed specifically for Community Unit District 200's needs and wants. Johnson and Whittier Communities were asked to take the survey which resulted in 160 individuals answering five questions. The idea behind the survey was to gather input and data on what the community felt libraries could look, feel, and function and what types of spaces they needed in their libraries.

- **Student / Teacher Interviews**

An intensive analysis of the survey questions was conducted and followed up by student interviews. This was to better understand if there is a commonality between the students and the community needs and to address as many of those needs as possible.

Library Paradigm Shift

	PAST	FUTURE
Library Purpose	Production, Storage & Distribution of Content	Creation of Content
Academic Library Role	Source of Academic Information	Commitment to Student Success
Spatial Focus	Books (Stacks)	People (Collaboration Space)
Spending Focus	Print Materials	Electronic Resources
Attraction to Students	Quiet Study Place	Enticing Destination, Community and Collaboration
Role of Librarian	Cataloging, Print Preservation & Teaching	Instructional Design, Information Literacy, Faculty Research Support



Types of Spaces

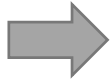


- Open Space
- Reading Nook
- Breakout Rooms/Spaces
- Genius/Technology Bar
- Circulation Desk
- Student Hub

Kit of Parts

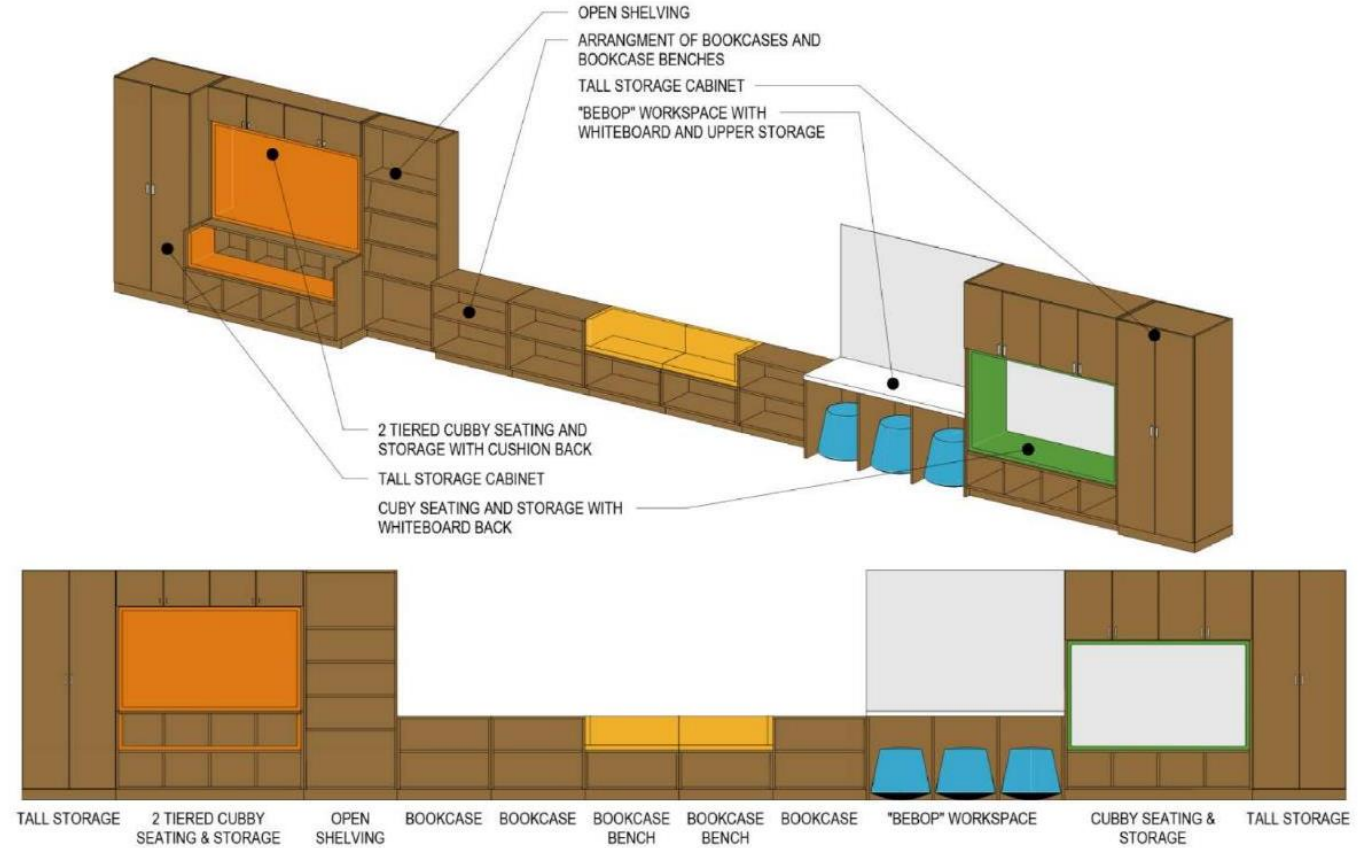
Types of Spaces:

- Open Space
- Reading Nook
- Breakout Rooms
- Genius Bar
- Circulation Desk
- Student Hub

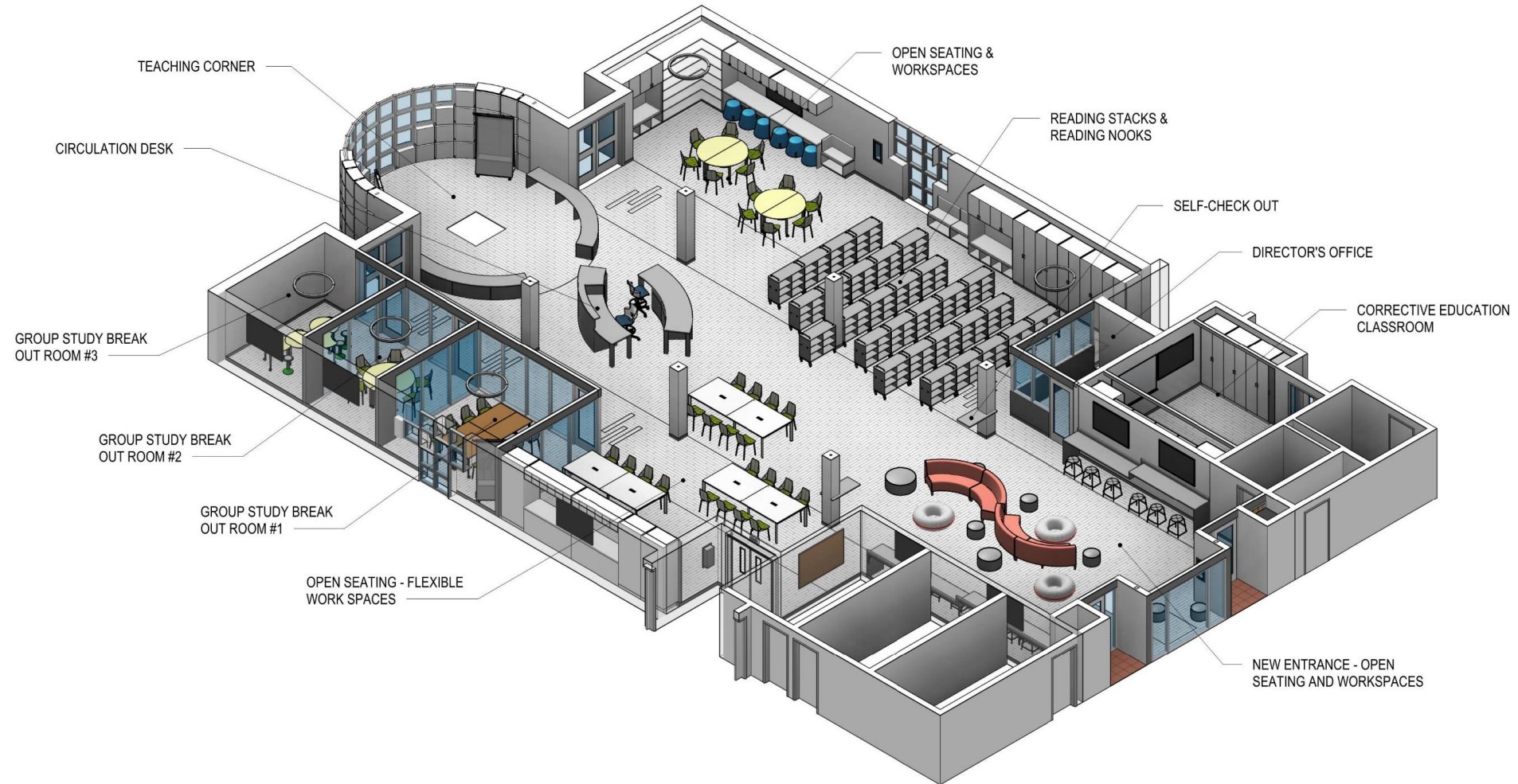


Casework & Equipment:

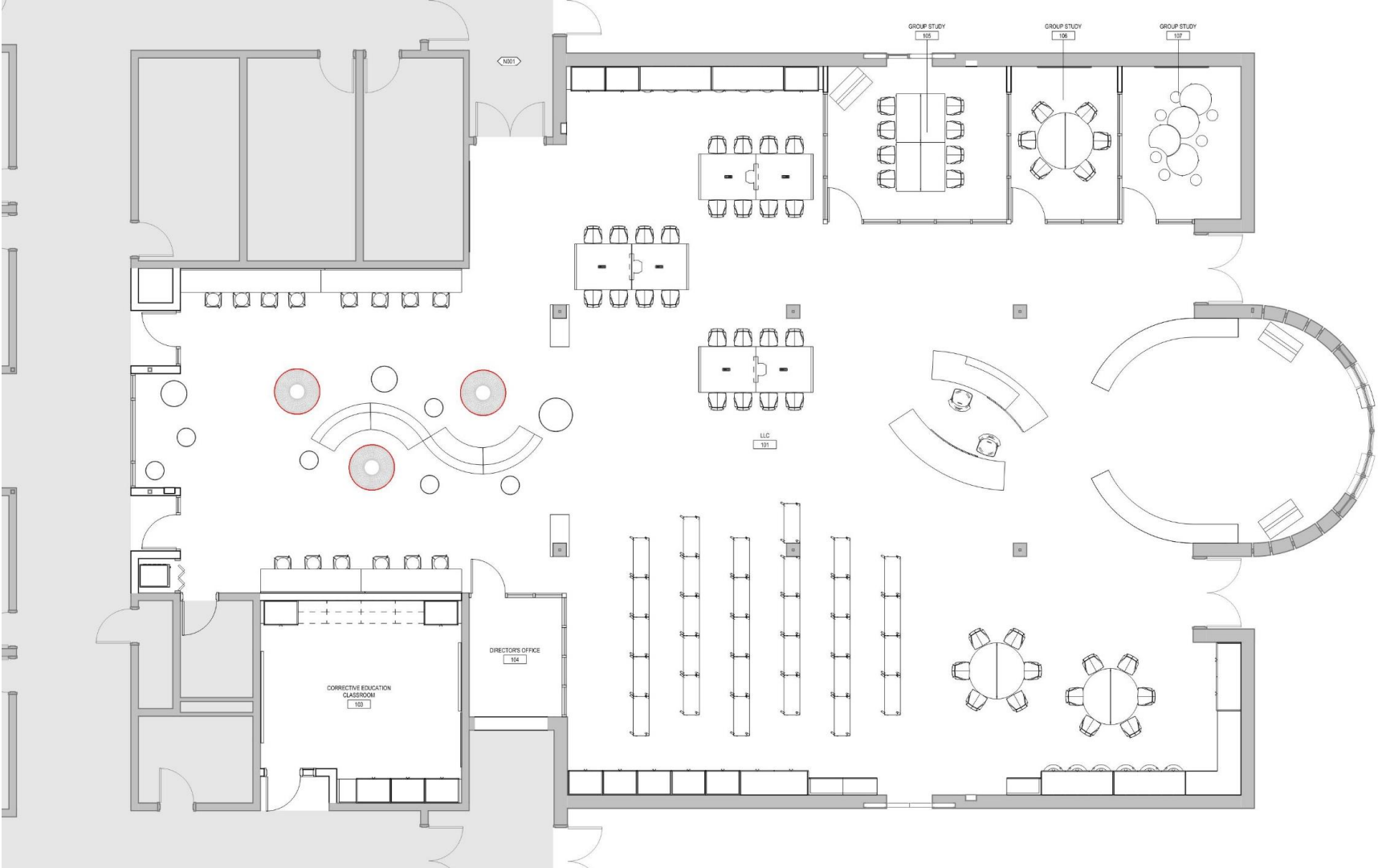
- Flexible Furniture
- Comfortable Reading
- Enclosed Privacy
- Technology/Furniture
- Functionality & Mobility
- Collaboration Station



Johnson LLC - Axonometric Diagram



Johnson LLC - Floor Plan



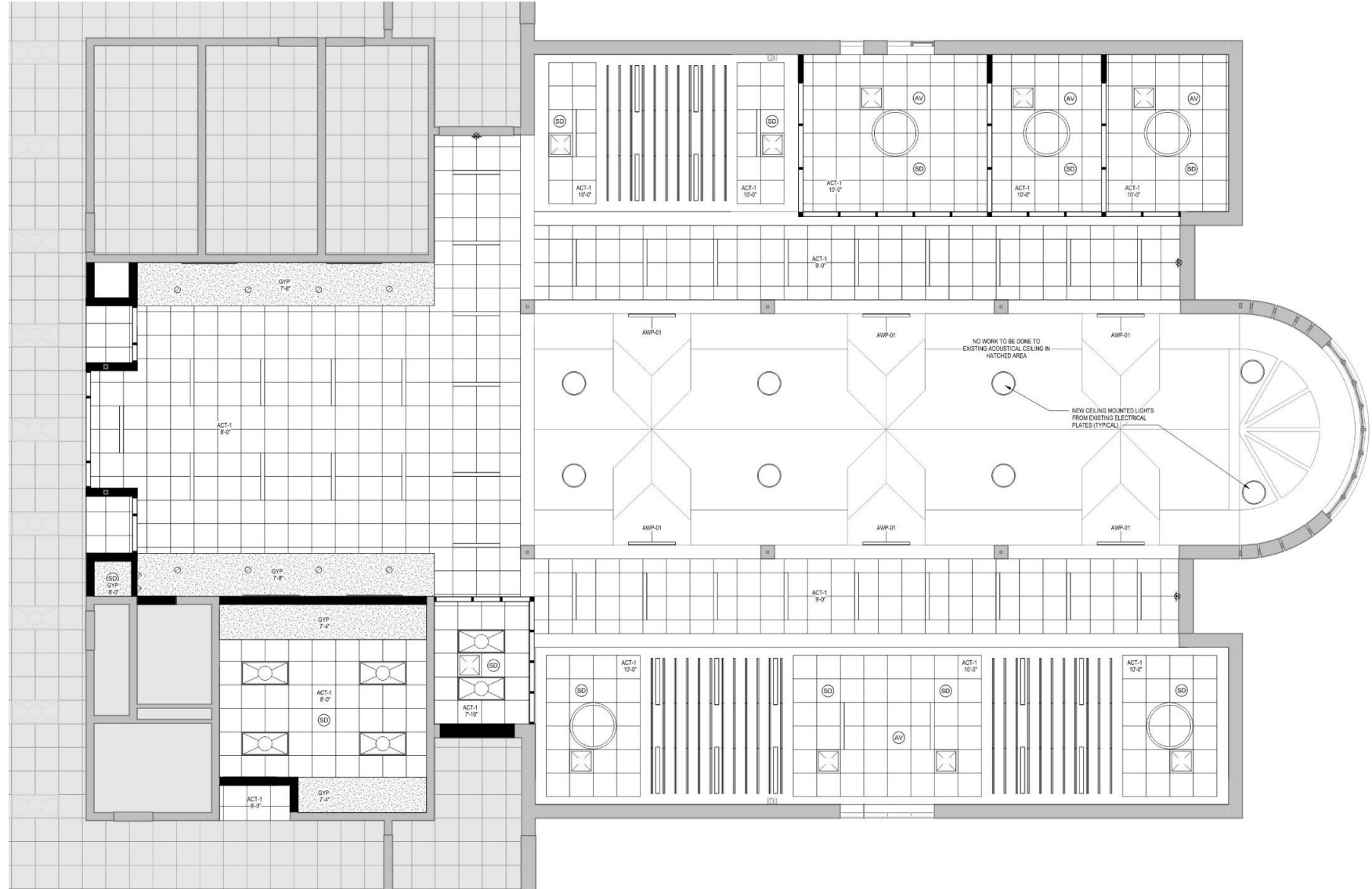
Johnson LLC - Ceiling Plan



Ceiling Baffles & Linear Lights



Acoustical Lighting Systems



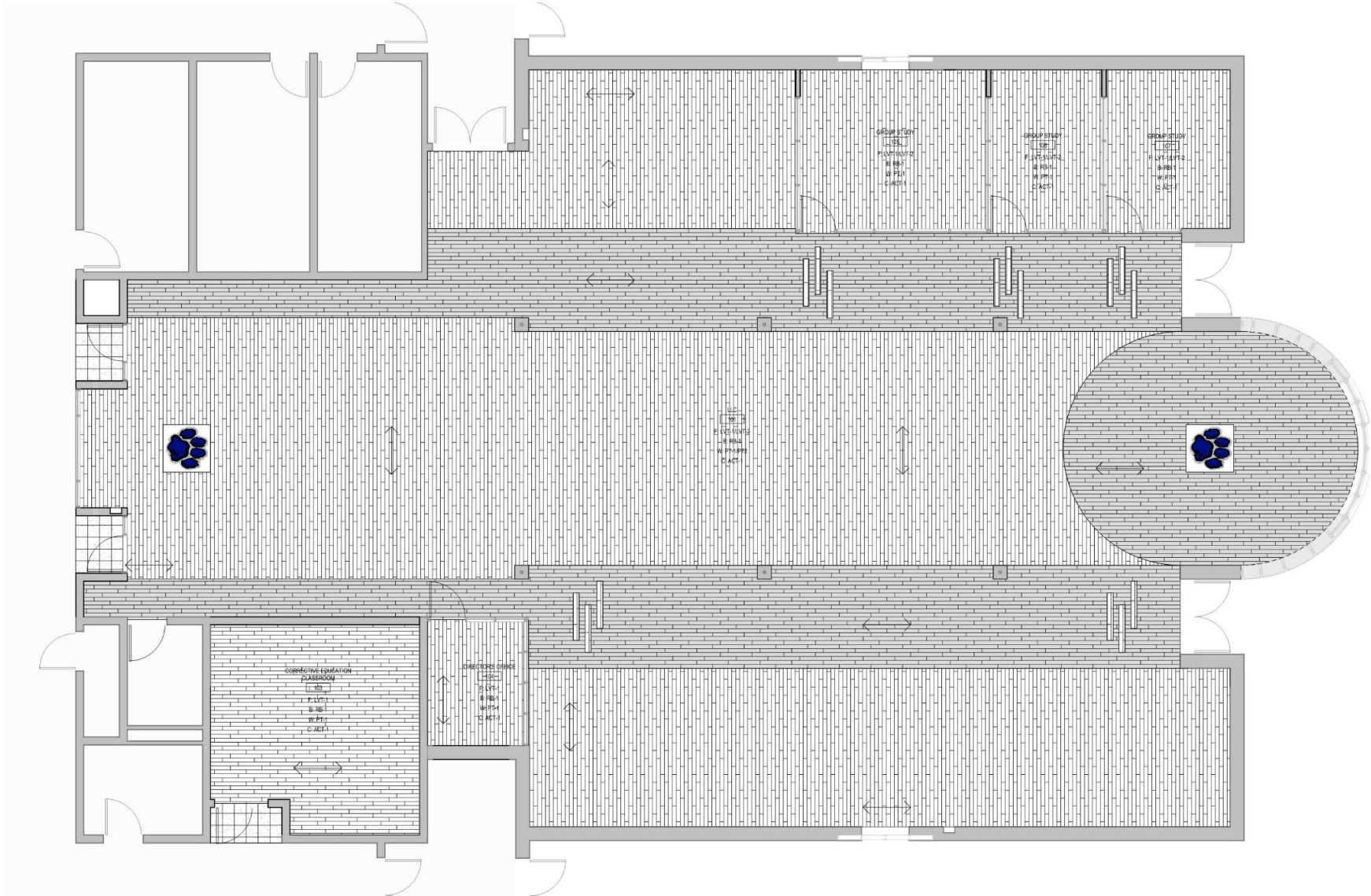
Johnson LLC - Finish Plan



Inlay Paw Print Logo



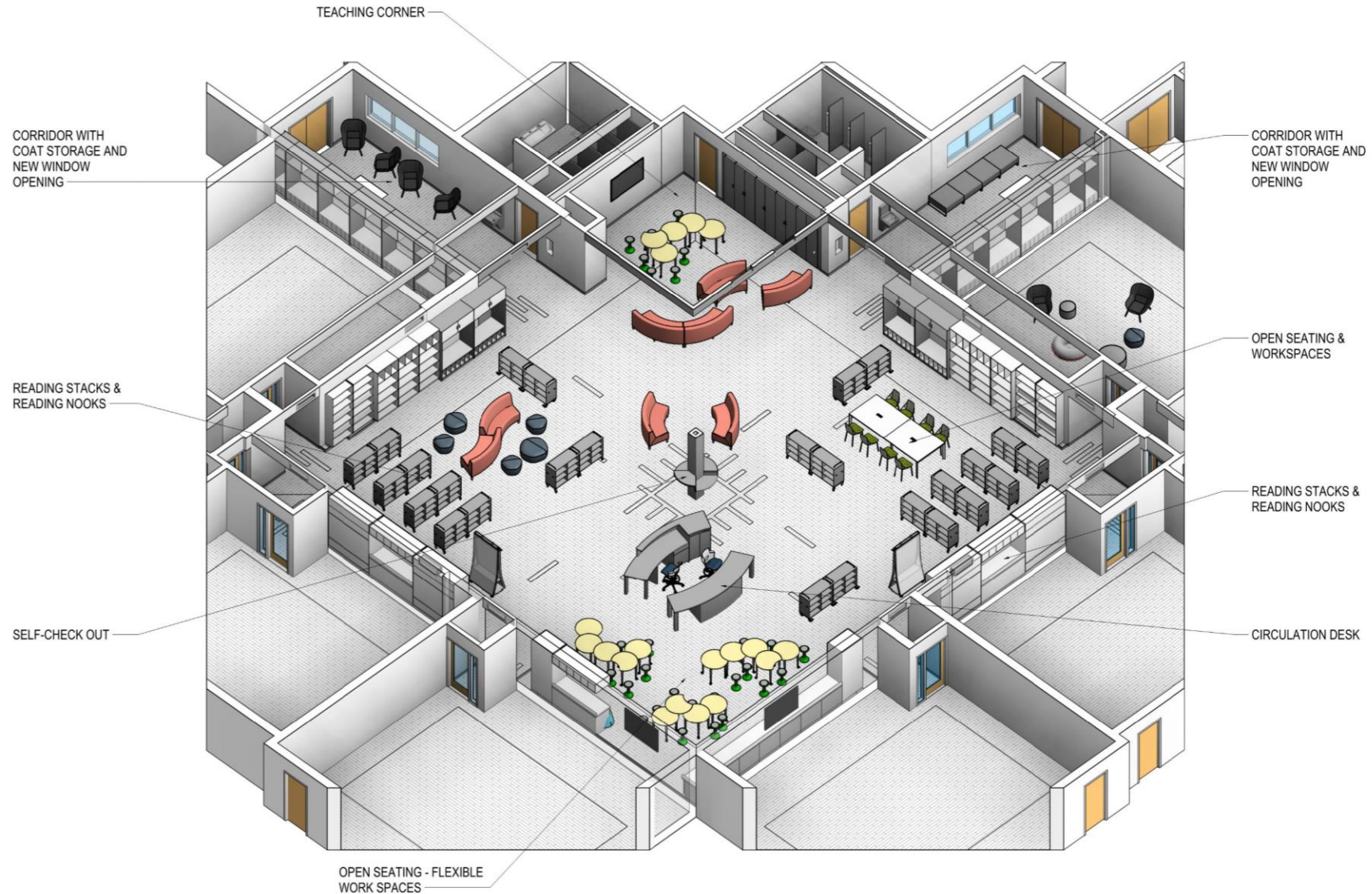
Luxury Vinyl Tiles -
Flooring



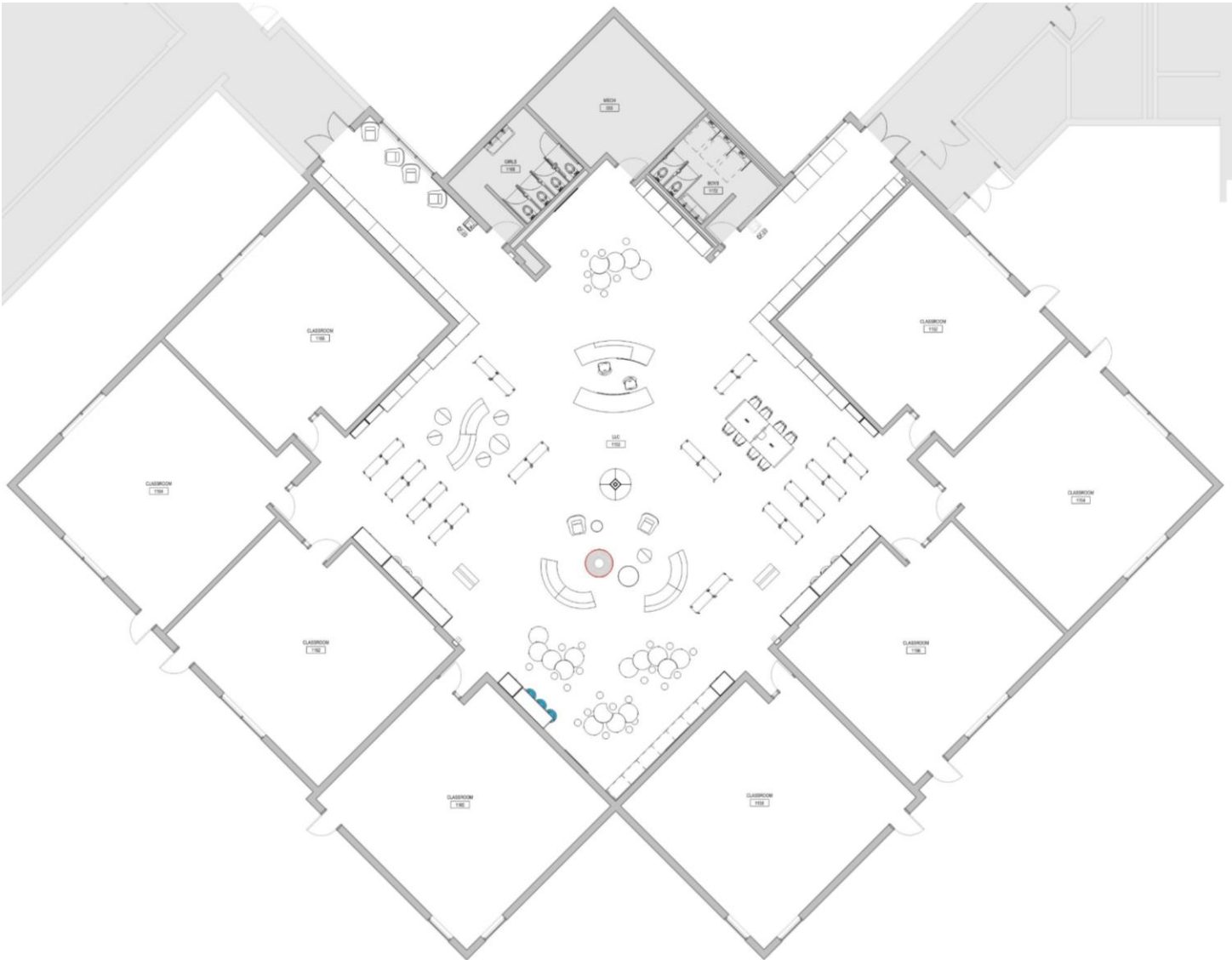
Johnson LLC - Walkthrough



Whittier LLC - Axonometric Diagram



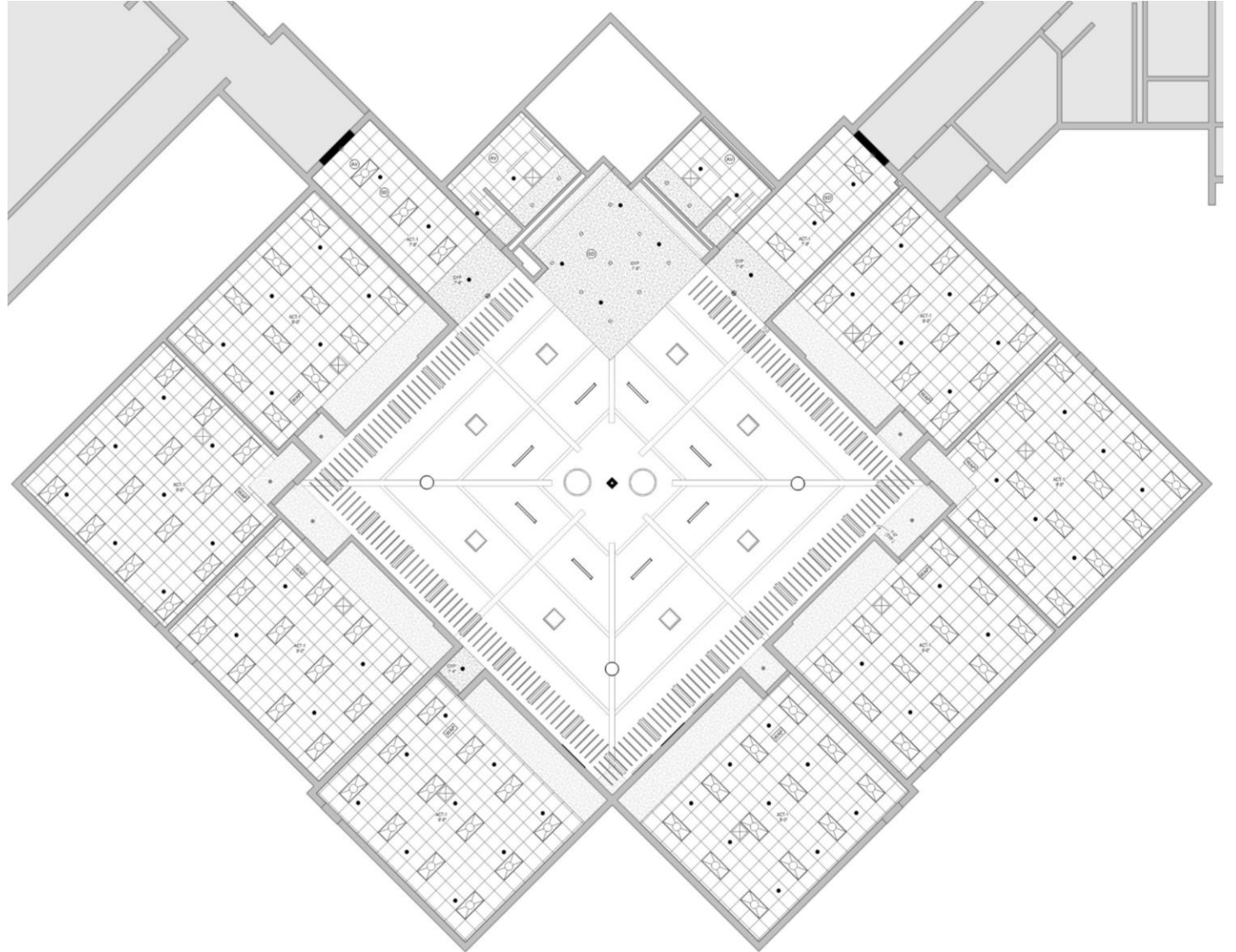
Whittier LLC - Floor Plan



Whittier LLC - Ceiling Plan



Solatube – Tubular Daylighting System



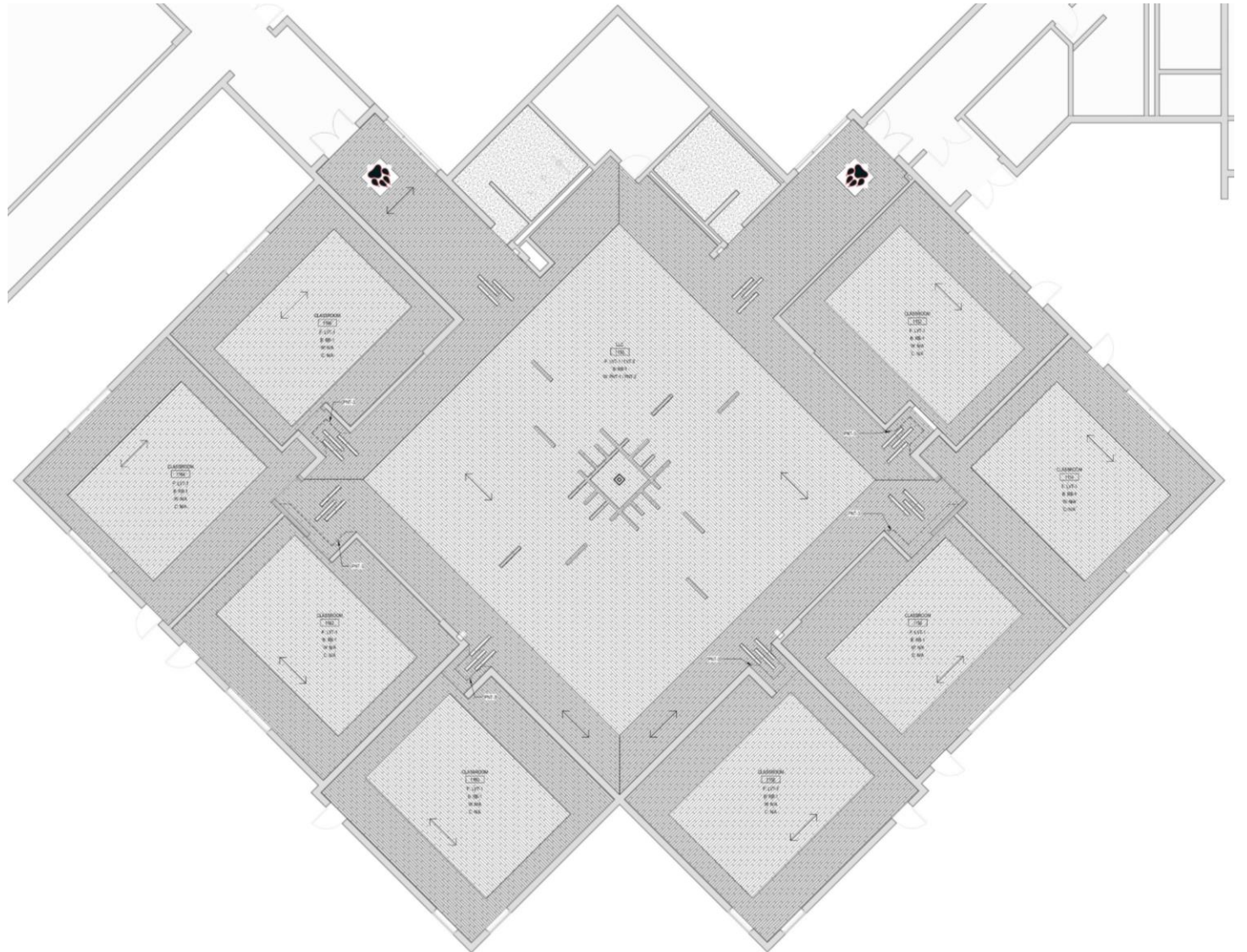
Whittier LLC - Finish Plan



Inlay Paw Print Logo



Luxury Vinyl Tiles -
Flooring



Whittier LLC - Walkthrough



Remaining Timeline

PLANNING PROCESS

JANUARY YEAR ONE

- Establish schools to be completed the following summer
- Establish stakeholders

FEBRUARY YEAR ONE

- Conduct tours
- Develop and conduct Community Survey

MARCH YEAR ONE

- Conduct student and stakeholder interviews
- Analyze survey and interview results

MAY YEAR ONE

- Receive Final Feedback for School Designs
- Develop Playbook

APRIL YEAR ONE

- Internal Architectural Design Charette
- Provide School Design Drafts for Feedback

JUNE YEAR ONE

- Formal Board of Education approval to proceed
- Start Design Documents

SEPTEMBER YEAR ONE

- 95% Construction Documents complete
- Start final comments
- Issue advertisement for bids

OCTOBER YEAR ONE

- Issue Bid Documents
- Pre-Bid Meeting
- Receipt of Bids & Bid Opening

NOVEMBER YEAR ONE

- Final Contract Recommendations
- Board Meeting: Award Construction Contracts

JUNE YEAR TWO

- Start construction

AUGUST YEAR TWO

- Substantial Completion
- Punch List Complete
- Teachers Start
- School Starts

PLANNING TIMELINE

keeping on track

PROCESS

The library should be an extension of learning. Educators, students, and community members should be excited to come and know that they will find more recourses and discovery. To be able to achieve these results, adequate time should be account for in the design phases as well as in the construction phases of a project.

WHAT'S NEXT

Once understanding the process needed to achieve future focused library environments, then ideation phases can be conducted on each specific school. These phases include student interviews and information gathering as well as site visits and design reviews.

